

Binz is a quarter of Zurich and is situated in the south west of the city. Binz is built on a filled up pit, where loam was mined.

In this area we could choose between three building sites, to create a library of about thousand quare meters.



photo: work model, ground floor

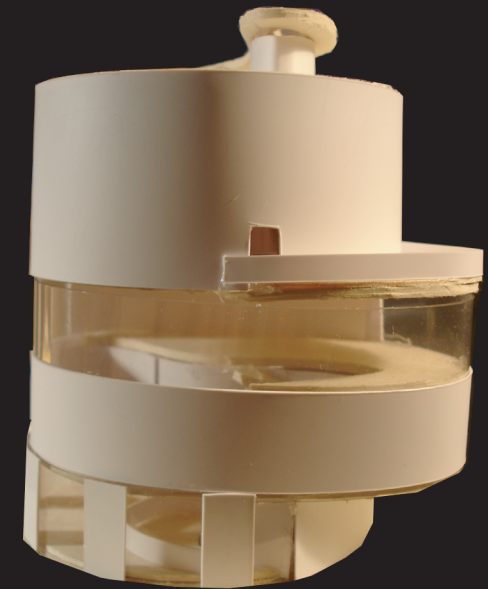


photo: work model, west view

The program includes a hall of 400 m² with workplaces and bookshelves, a secretary's office of 25 m², 25 m² for copiers, a café with 150 m², a hall for readings of 100 m², a lounge with about 50 m², toilets and wardrobe with 50 m² and a station with a shop of about 100 m².