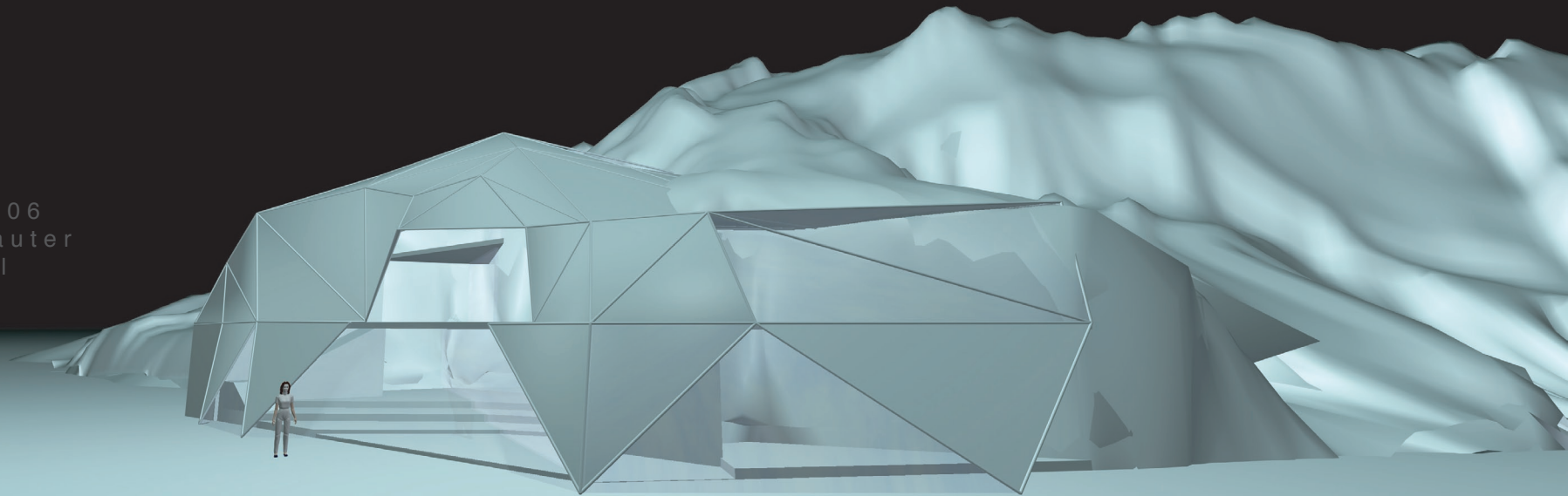


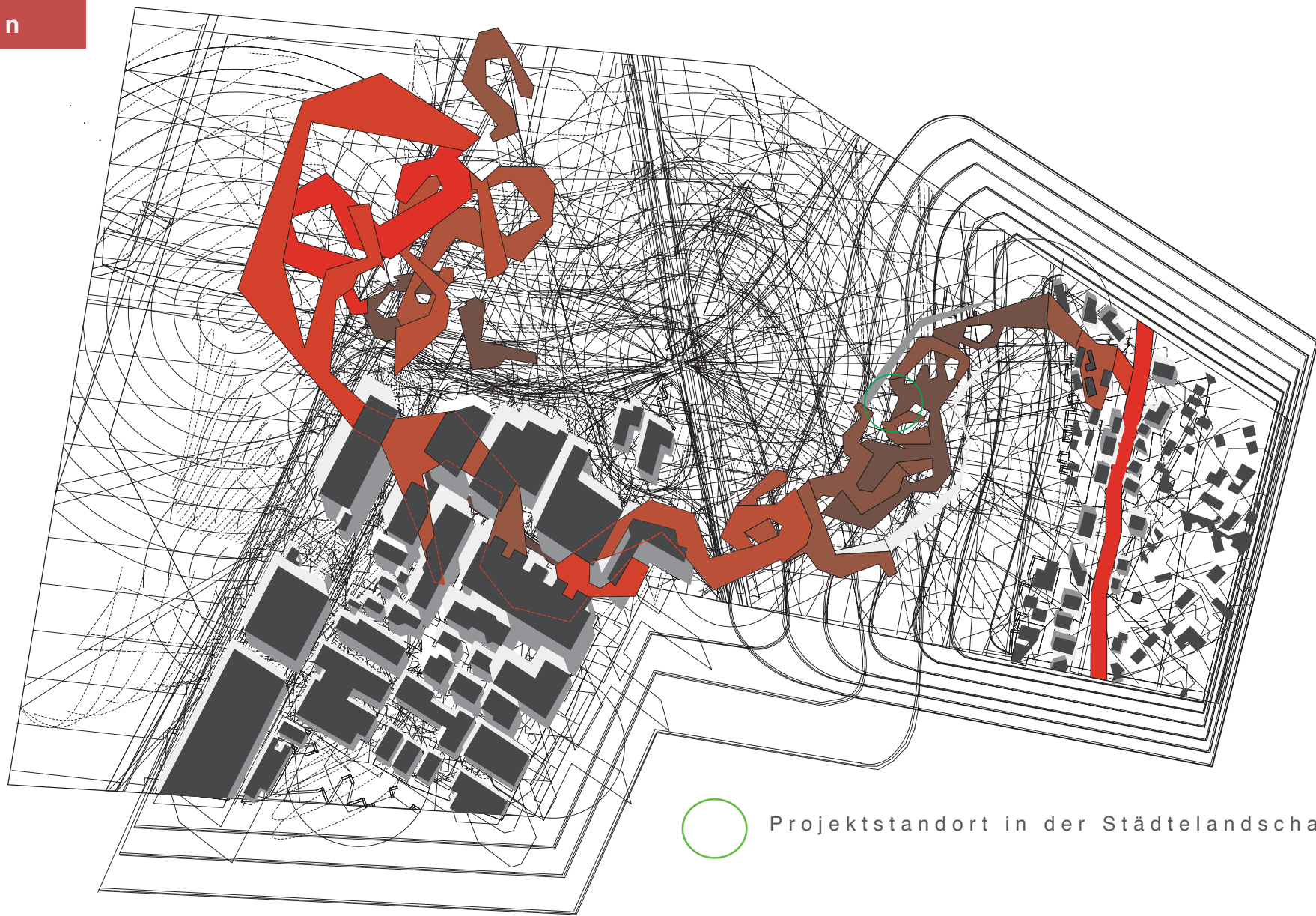
DIE HÄNGENDEN GÄRTEN

Haus für eine Orchideenliebhaberin

Portfolio
Entwurf 2. Sem SS06
Ass.: Christoph Sauter
Prof.: Marc Angélli

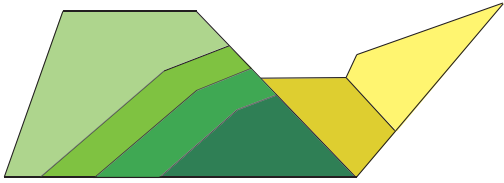


situation



○ Projektstandort in der Städtelandschaft

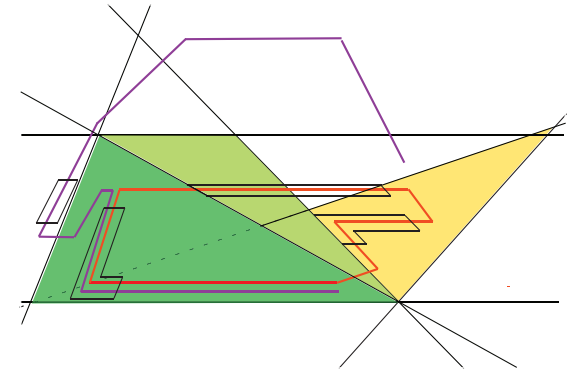
k o n z e p t



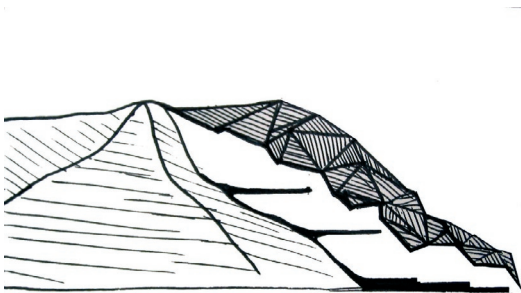
Terrassierung I
Aufschüttung des Bodens



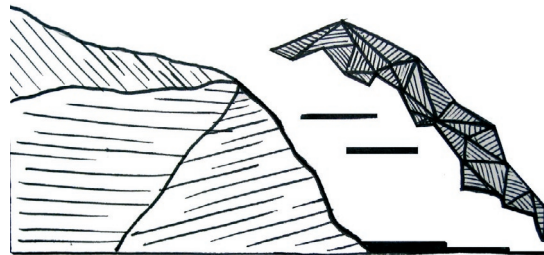
Terrassierung II
versetzte Ebenen



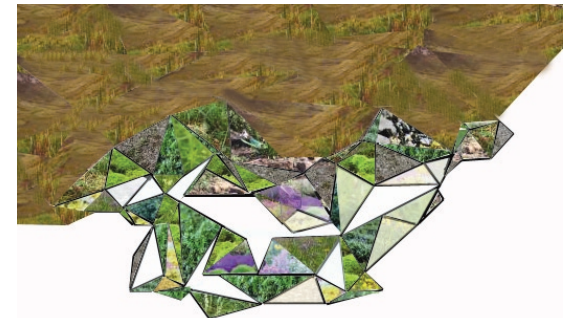
- privater Weg
- öffentlicher Weg
- öffentliche Zone
- halböffentliche Zone
- private Zone



keine vertikalen Elemente

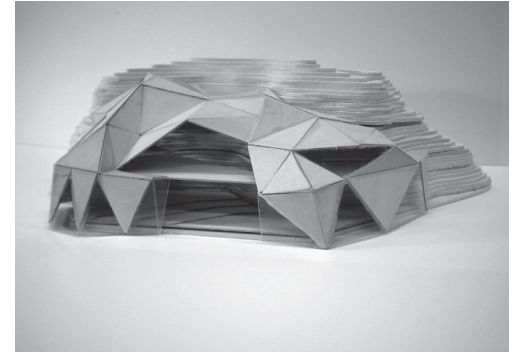
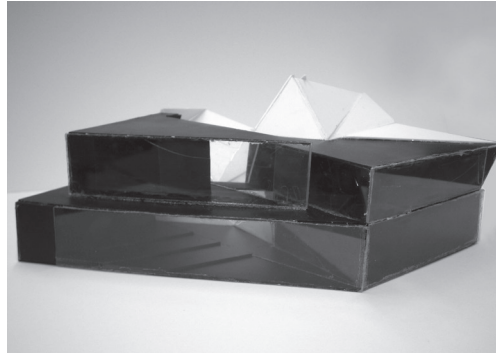
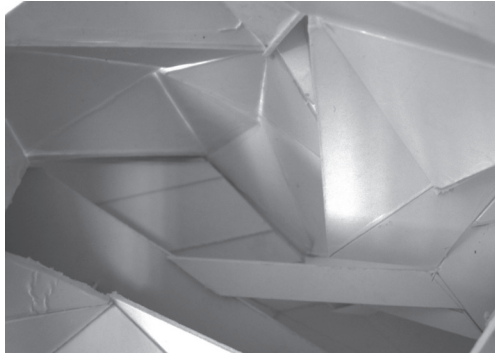
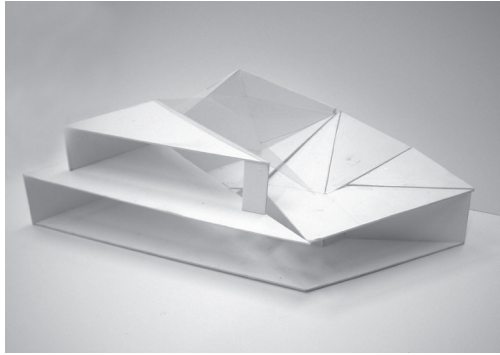


Begrenzung durch die Natur

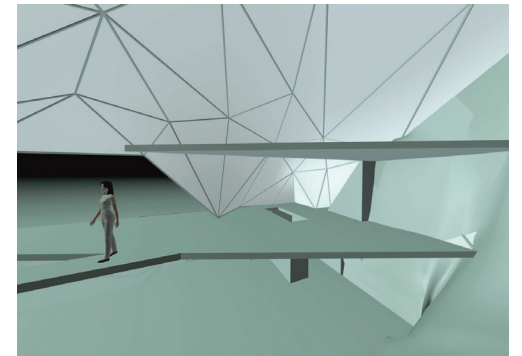
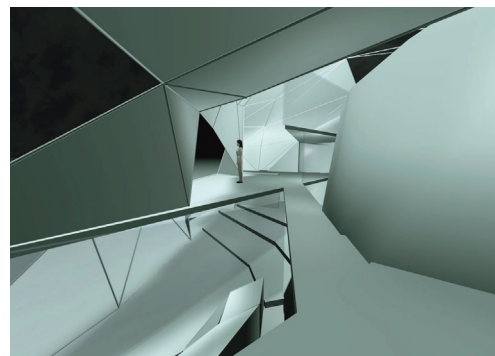
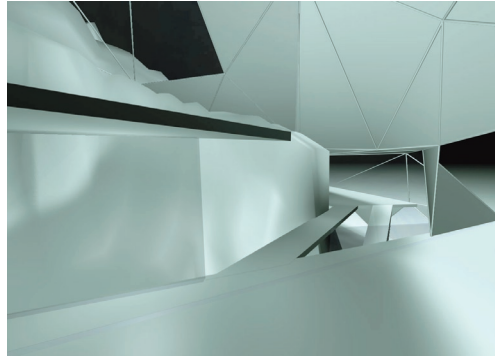
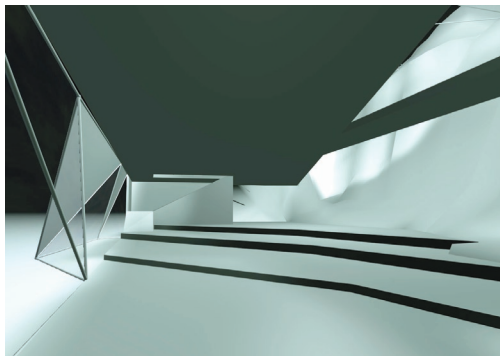


Dächer werden zu Grünflächen

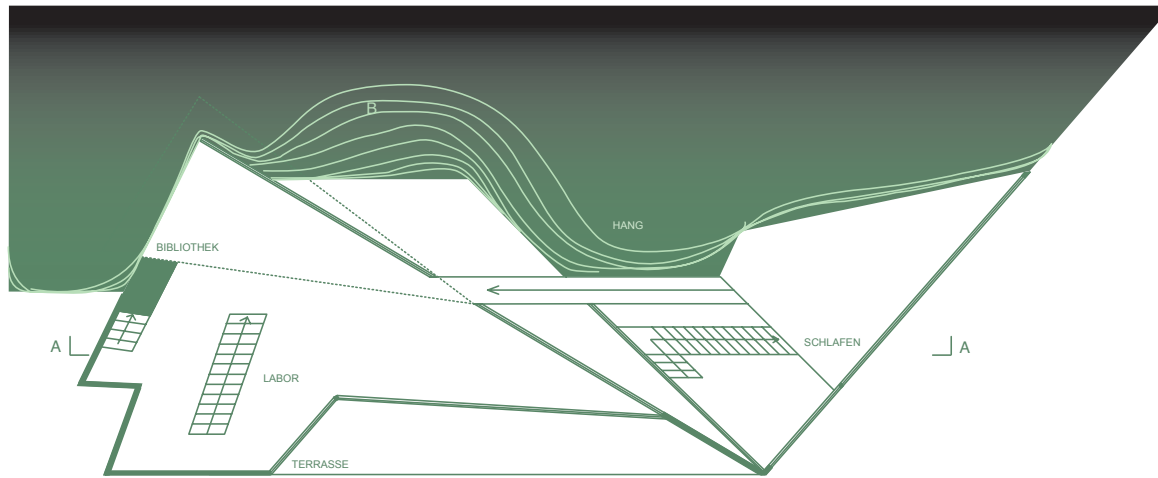
modellfotos



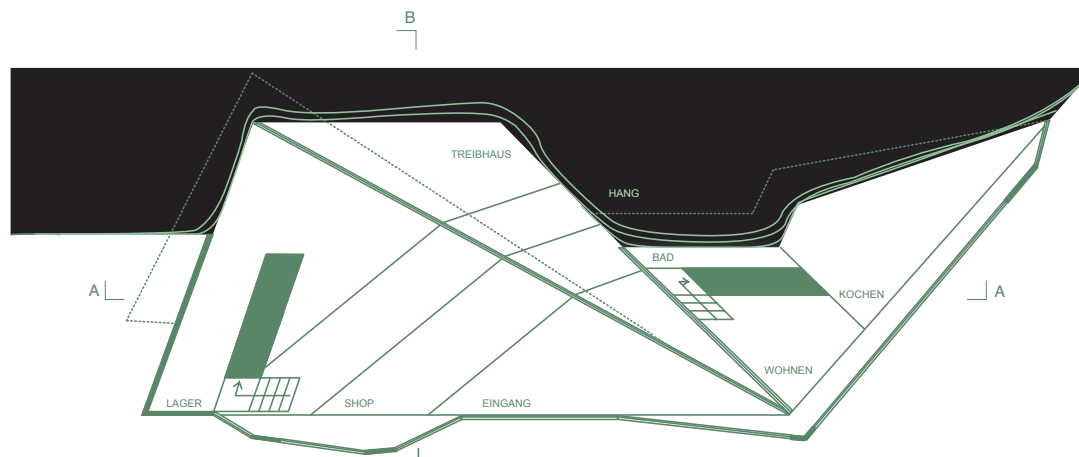
renderings



pläne

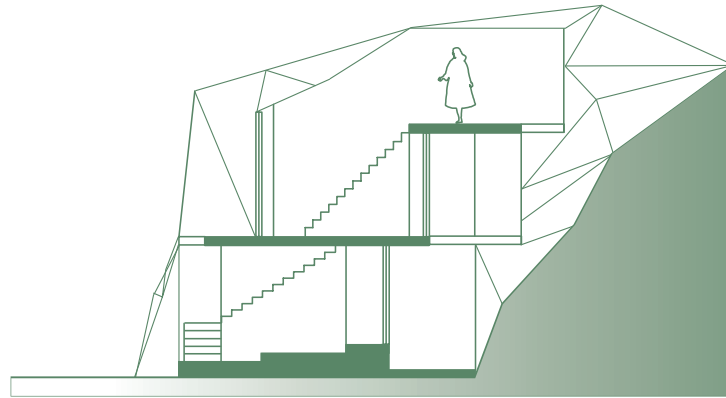


Obergeschoss 1:200

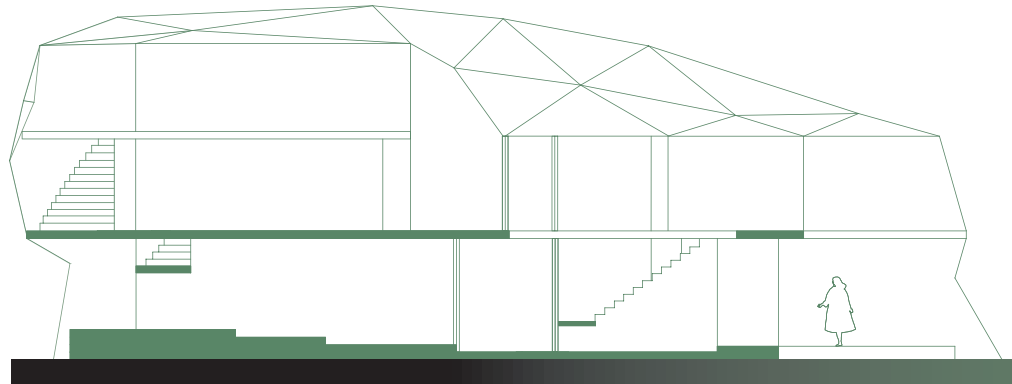


Erdgeschoss 1:200

schnitte



Schnitt B-B 1:200



Schnitt A-A 1:200